

Department spaces used for instruction & conferencing

Audio Visual Guidance



Existing Department Room Types

AV Capable

Non-general assignment, department-managed spaces that are currently equipped with presentation technology that enables the output of video and sound (i.e., mounted television with speakers or projector screen with speakers)

AV Deficient

Non-general assignment, department-managed spaces with capacity under 40 that are NOT currently equipped with presentation technology (any rooms with capacity over 40 will likely not be able to accommodate dual-mode instruction)



AV Capable

Recommendation is to bolster these rooms to mirror general assignment (GA) rooms, such as:

- Advanced ceiling-mounted, voice-tracking microphone system
 - Wireless mic lapel optional for in-room amplification
- Pan/tilt/zoom camera mounted at back of room, configured with presets for scene type
- Audio and visual signals routed to the in-room PC
- When running Zoom, this setup will allow for synchronous two-way communication between in-room and remote participants

Sample Equipment List for AV Capable Rooms

Qty	Description	Notes	Manufacturer	Model	Part Number	Price Per	Subtotal
1	PTZ HD Camera (HD-SDI, RS-232)		Lumens	VC-A50PN	VC-A50PN	\$2,000.00	\$2,200.00
1	Wall mount shelf for Lumens		Lumens	VC-WM12W	VCWM12W	\$160.00	\$176.00
1	Mic array	*suitable for room up to approximately 55 seat capacity	Sennheiser	TeamConnect SL Ceiling 2	SL CEILING MIC 2	\$2,900.00	\$3,190.00
1	5-Port Gigabit PoE Unmanaged Switch		TP-Link	TL-SG1005P	TL-SG1005P	\$50.00	\$55.00
1	Document camera (HDMI & USB)		Hover Camera	Duo	HCD	\$500.00	\$550.00
1	Rack shelf		Extron	RSU 129	60-190-01	\$80.00	\$88.00
1	Digital matrix processor		Extron	DMP 64 Plus C AT	60-1823-10	\$1,508.00	\$1,658.80
1	SDI to USB converter	*best solution for smaller rooms with no or simple microphone support systems	Epiphan	AV.io SDI	ESP0964	\$430.00	\$473.00
1	HD-SDI to HDMI converter		Black Magic	Micro Converter SDI to HDMI 3G	CONVCMIC/SH03G/WPS U	\$49.00	\$53.90
1	HDMI and Audio to USB Scaling Bridge	*best solution for larger rooms with existing microphone and audio processing systems	Extron	MediaPort 200	60-1488-01	\$1,620.00	\$1,782.00
1	Wireless microphone receiver		Shure	ULXS4-G3	ULXS4-G3	\$450.00	\$495.00
1	Wireless microphone transmitter		Shure	ULX1-G3	ULX1-G3	\$200.00	\$220.00
1	Mic cable		Pyle	PLMS30	PLMS30	\$17.00	\$18.70
1	Assorted cables, hardware		Various	Various	Various	\$500.00	\$550.00
						EQ Total	\$9,728.40
						EQ Total	\$6,134.70

Please note that the above list is based on a standard AV capable room. Your room needs may vary. Additionally, the pricing listed is base campus pricing. Please anticipate a price increase of 20-50% when contracting an outside integrator for installation.

Benefits

- Existing audio visual equipment bolstered by additional tech
- Ceiling-mounted, voice-tracking microphone allows remote students to hear instructor & in-class students
- Room speakers allow remote students to participate in real-time with 2-way audio
- Zoom allows presentation to be live-streamed to remote students or for guest speaker participation
- Back-wall-mounted PTZ camera allows instructor to teach from front of room
- Projection allows in-class students to learn & participate



AV Deficient

Rooms Intended for Conferencing

Recommendation is to install basic dual-mode presentation technology, including:

- Wall-mounted TV
- Advanced all-in-one USB-connected conferencing system (microphone, camera, speakers)
- Presenter will bring their own device, plug it in, launch Zoom, and present to both in-room and remote audience

Rooms Intended for Instruction

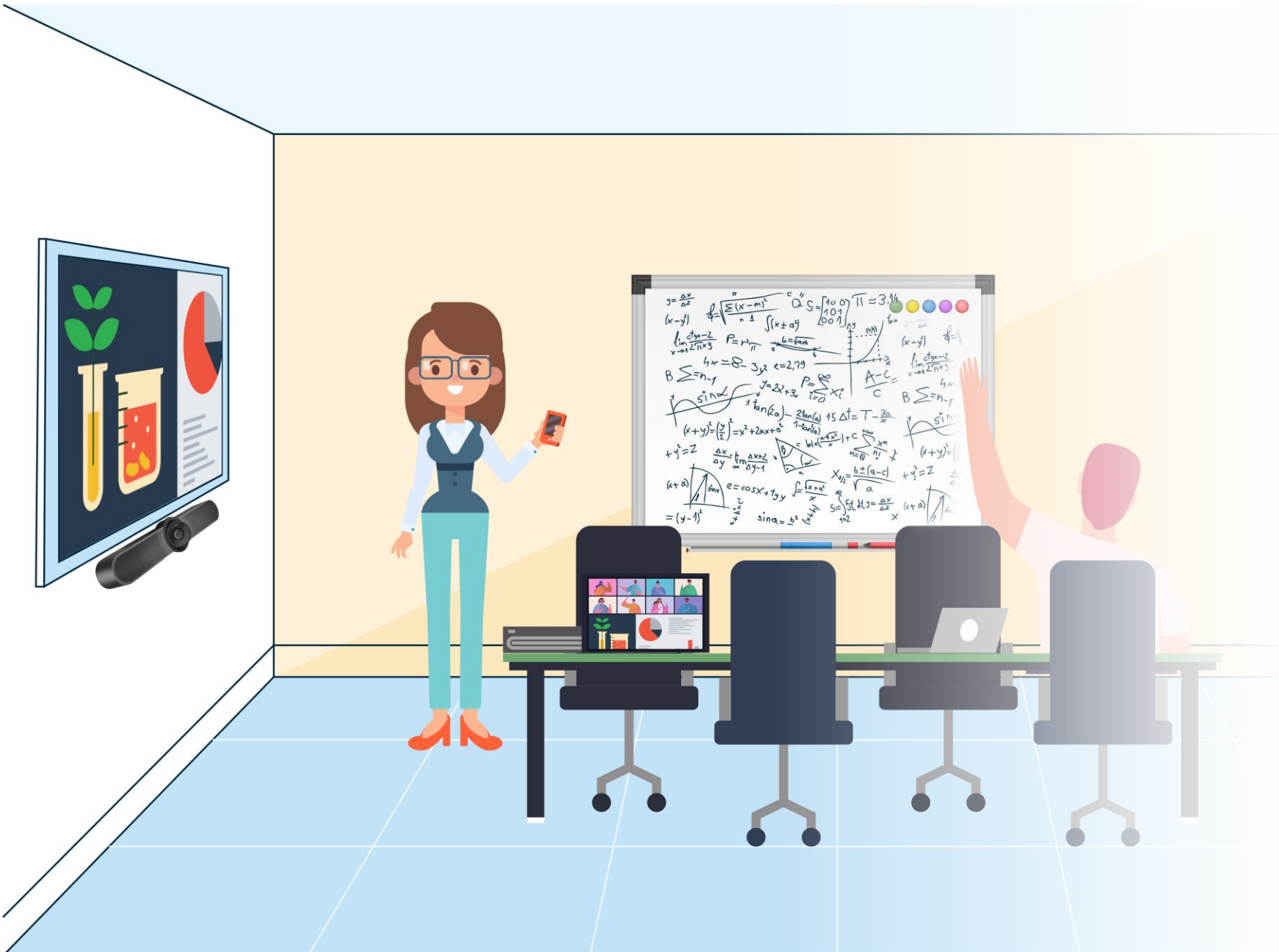
If investment in or permanent installation of suggested classroom technology is not possible, the recommendation is to purchase a mobile video conferencing device that can be used to enhance room AV capability on an "as needed" basis ([learn more](#))



Sample Equipment List for AV Deficient Rooms

Qty	Item Description	Manufacturer	Model	Price Per	Subtotal
1	75" LED TV	Samsung	UN75NU6900FXZA	\$1,000.00	\$1,100.00
1	Tilt wall mount for TV	Chief Mfg	LTM1U	\$200.00	\$220.00
1	Pan tilt zoom camera for video conferencing	Logitech	Rally Bar	\$3,999.00	\$4,398.90
1	Control system (optional, can use TV remote)	Extron	MLC Plus 50	\$500.00	\$550.00
1	Wall plate for HDMI connection	Extron	WPD 160	\$60.00	\$66.00
1	TV mount for Logitech Rally Bar	Logitech	TV Mount	\$180.00	\$198.00
1	USB document camera	Hovercam	Duo	\$500.00	\$550.00
1	Wireless keyboard and mouse for PC	Gyration	GYM1100FK	\$150.00	\$165.00
1	Misc cables and connectors	Various	Various	\$100.00	\$110.00
				Equipment	\$7,357.90

Please note that the above list is based on a standard AV deficient room. Your room needs may vary, and equipment part information will be dependent on manufacturer chosen. Additionally, the pricing listed is base campus pricing and varies based on manufacturer used. Please anticipate a price increase of 20-50% when contracting an outside integrator for installation.



Benefits

- Presenter plugs in own device to in-room AV system via USB
- Camera mounted under TV means content on other walls, such as whiteboards, may not be captured
- TV display allows in-room and remote attendees to participate
- All-in-one conferencing system allows remote attendees to participate in real-time with 2-way audio
- Zoom allows presentation to be live-streamed to remote audience
- Camera mounted under TV means video may capture presenter profile

Questions?

If you have specific questions or concerns about the multimedia technology needed to support your specific department space, you can [request a technology consultation](#). ITS will provide custom recommendations based on your needs, and will help you work with an outside integrator for installation.



In IT Together

UCR ITS